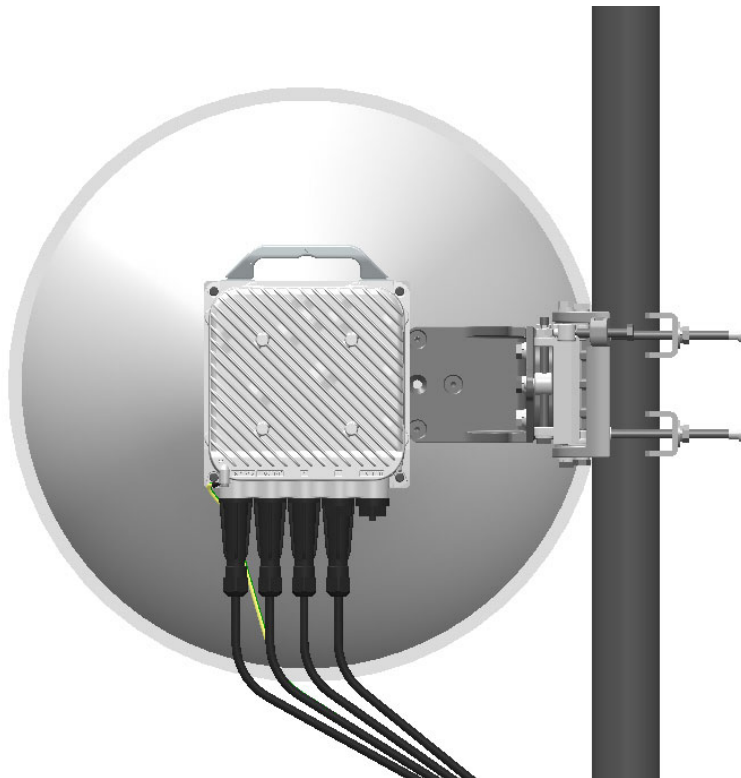


**71-76/81-86 GHz
PACKET RADIO SYSTEM**

**iPASOLINK EX
Advanced**

INSTRUCTION MANUAL



NEC Corporation

7-1, Shiba 5-Chome, Minato-Ku, Tokyo 108-8001, Japan

© 2016 – 2023 by NEC Corporation

All rights reserved. No part of this document may be reproduced, stored in a retrieval system, or transmitted, in any form or by any means, including electronic mechanical, photographic, or magnetic, without prior written permission of the publisher.

Windows® is a registered trademarks of Microsoft Corporation. UNIX® is a registered trademark of the Open Group. Java is a trademark or registered trademark of Sun Microsystems, Inc. Ethernet is a registered trademark of Xerox Corporation. Adobe® Reader® is a trademark or registered trademark of Adobe Systems Incorporated.

iPASOLINK contains “Open Source Software” provided under its applicable license terms.

- GNU GENERAL PUBLIC LICENSE Version 2: <http://www.gnu.org/licenses/old-licenses/gpl-2.0.txt>
- GNU GENERAL PUBLIC LICENSE Version 3: <http://www.gnu.org/licenses/gpl-3.0.txt>
- GNU AFFERO GENERAL PUBLIC LICENSE: <http://www.gnu.org/licenses/agpl-3.0.txt>
- FreeBSD License: <http://www.freebsd.org/copyright/freebsd-license.html>
- NET-SNMP License: <http://net-snmp.sourceforge.net/about/license.html>
- Ruby License: <http://www.ruby-lang.org/en/LICENSE.txt>
- Creative Commons - Attribution 2.5: <http://creativecommons.org/licenses/by/2.5>
- The MIT License: <http://www.opensource.org/licenses/mit-license>
- OpenBSD License: <http://www.openbsd.org/policy.html>

iPASOLINK EX Advanced

GENERAL CONTENTS

This manual contains the following descriptions for the equipment: iPASOLINK EX Advanced (hereinafter iPASOLINK EX/A)

And this manual is applicable to EX Advanced Dual (EX/A Dual) too.

Ref #	CONTENTS	DOCUMENTATION #
■ iPASOLINK EX/A Descriptions		
1	Safety Information	GGs-000544-09E
2	General Descriptions	GGs-000545-07E
3	Installation	GGs-000546-13E
4	Set Network and System Provisioning	GGs-000547-16E
5	Operation and Maintenance	GGs-000548-13E
6	Specifications	GGs-000549-06E
■ Annex		
A1	Open Source Software	GGs-000552-13E
A2	Radio Frequency Plans	GGs-000553-04E
A3	CLI Command Reference	GGs-000556-04E
A4	Abbreviations and Acronyms	GGs-000557-03E
A5	MTA Annexure	GGs-000559-02E

See the *Documentation Overview* also.



NEC Corporation, hereby declares that the radio equipment type iPASOLINK Series is in compliance with the Directive 2014/53/EU.

The full text of the EU declaration of conformity is available at the following Internet address:

https://www.nec.com/en/global/prod/nw/pasolink/support/RED_DoC.html

DOCUMENTATION OVERVIEW

■ Safety Information

This manual provides the precautions and directions to install, operate and maintain the equipment safe.

■ General Descriptions

This manual provides the summary and features of iPASOLINK EX/A. This manual also provides the system applications and examples using iPASOLINK EX/A.

■ Installation

This manual provides the hardware descriptions and installation methods of the iPASOLINK EX/A. The methods of assembling cables are also provided.

■ Set Network and System Provisioning

This manual provides the steps to set up iPASOLINK EX/A using WebLCT.

■ Operation and Maintenance

This is an operating guide that provides the information required after the equipment is set up and is in service, such as checking/changing state, recovering the equipment, etc.

■ Specifications

This manual lists the system specifications.

ANNEX

■ Open Source Software

iPASOLINK EX/A uses the open source softwares listed in this manual.

■ Radio Frequency Plans

This manual lists the available frequencies that iPASOLINK EX/A supports.

■ CLI Command Reference

This manual lists and describes the CLI Commands that are used by iPASOLINK EX/A.

■ Abbreviations and Acronyms

This manual lists the abbreviations and acronyms that are used in the iPASOLINK EX/A Instruction Manual.

■ MTA Annexure

This manual describe the Multi Traffic Aggregation (MTA) feature of iPASOLINK EX Advanced and it's Use cases.

This page is intentionally left blank.